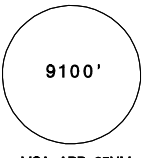
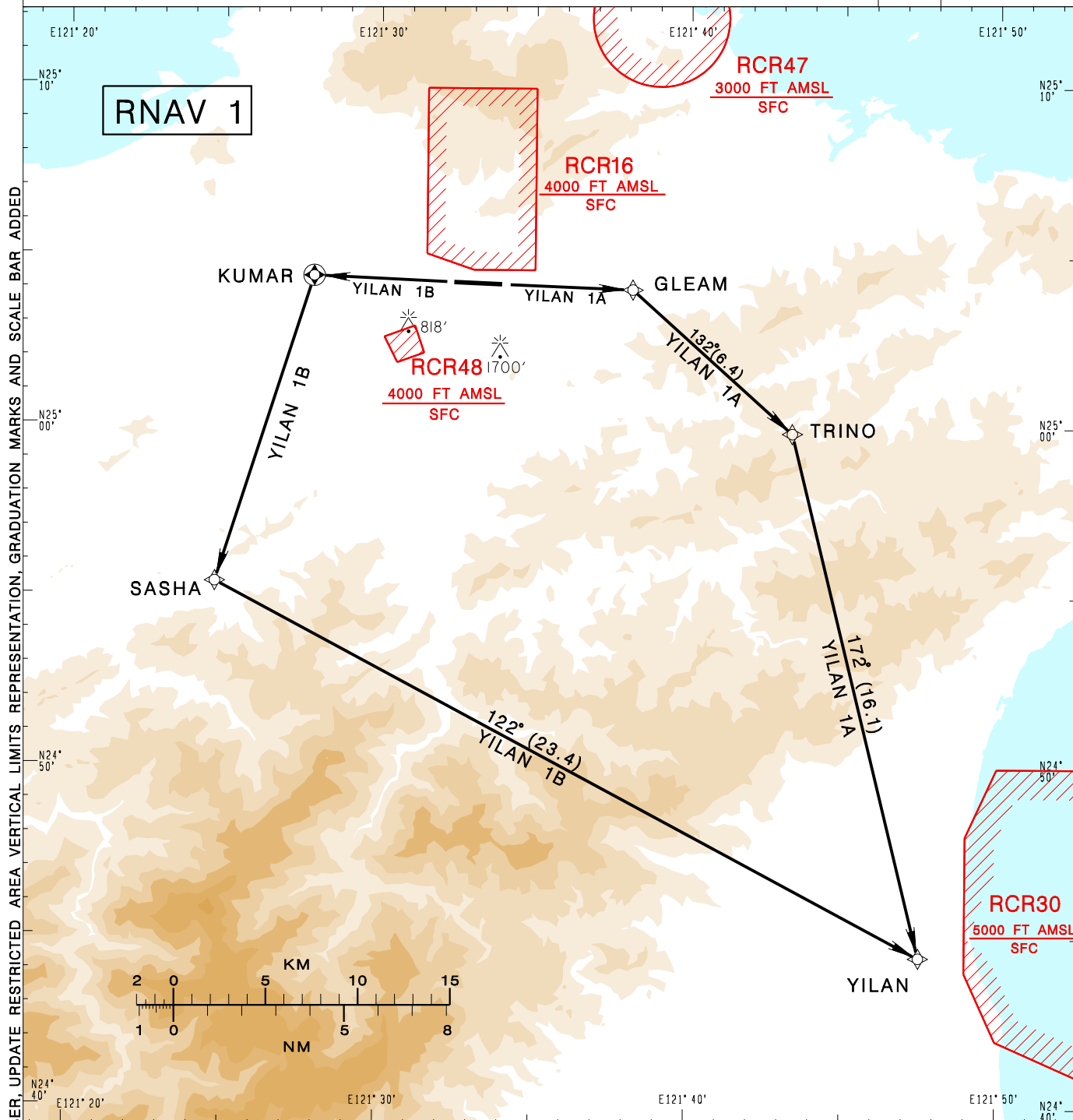


臺北/松山機場 TAIPEI/SONGSHAN AD

RCSS SID
YILAN 1A RNAV(RWY10)
YILAN 1B RNAV(RWY28)

TAIPEI APP 119.7 119.6 125.1	SONGSHAN TWR 118.1	ATIS 127.4 341	VAR 4° W 
Apt Elev: 18'	Trans Level: FL130	Trans Alt: 11,000'	
BEARINGS ARE MAGNETIC; DISTANCES ARE NAUTICAL MILES; ELEVATIONS, HEIGHTS IN FEET			



YILAN ONE ALFA RNAV DEPARTURE
Climb on RWY HDG until leaving 600ft,
then direct to GLEAM, TRINO, YILAN to join B591.

YILAN ONE BRAVO RNAV DEPARTURE
Climb on RWY HDG until leaving 500ft,
then direct to KUMAR, SASHA, YILAN to join B591

NOTE

- 1.YILAN 1A: Requires a minimum climb gradient of 6.1% (371ft/NM) until TRINO.
- 2.YILAN 1B: Requires a minimum climb gradient of 5% (304ft/NM) until YILAN or 7000ft.
- 3.Caution high terrain around airport.
- 4.A 1700ft-high BLDG at 2.1NM south of THR 28.
- 5.A 818ft-high BLDG at 2NM SW of THR 10.
- 6.Critical DME & DME gap not surveyed.
- 7.Radar monitoring required.

CHANGES: NEW PAGE NUMBER, UPDATE RESTRICTED AREA, VERTICAL LIMITS REPRESENTATION, GRADUATION MARKS AND SCALE BAR ADDED